

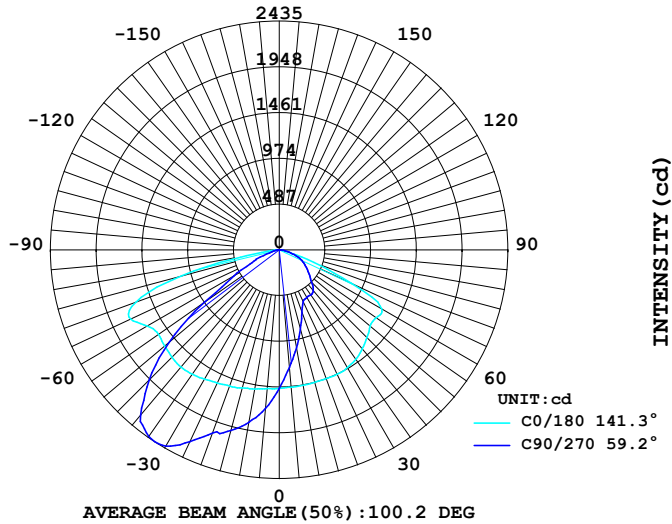
# LUMINAIRE PHOTOMETRIC TEST REPORT

Report number:

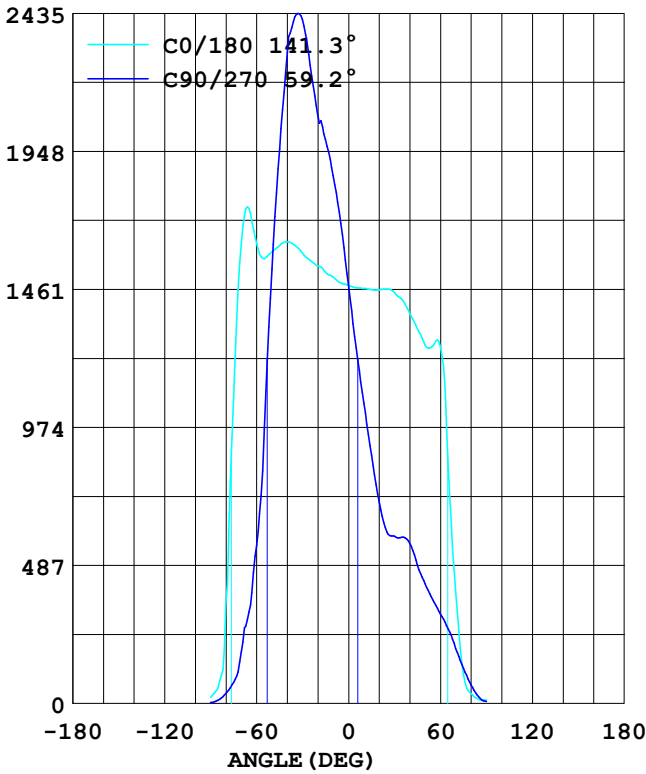
MANUFACTURER: ILUMEN GMBH	Address:	
NAME: Agnes B	TYPE: IL-PO29B-N0402C-T3B	WEIGHT:
SPECIFICATION: 5050LED、3000K、145*53DEG	DIMENSION:	SERIAL No.:

DATA OF LAMP		Imax(cd)	3098	S/MH (C0/180)	1.67
MODEL		EFFICIENCY (%)	100.0	S/MH (C90/270)	1.73
NOMINAL POWER(W)	40	TOTAL FLUX(lm)	5829.8	Voltage(V)	231.0
RATED VOLTAGE (V)	232	EFFICIENCY (lm/W)	150.1	Current(A)	0.164
NOMINAL FLUX(lm)	5829.9	$\eta$ up (%)	0.0	Power(W)	38.84
LAMPS QUANTITY	1	$\eta$ down (%)	100.0	Power Factor (PF)	0.919
TEST VOLTAGE (V)	231.0	Effective Flux(lm)	5829.9	EEL	0.100

LUMINOUS INTENSITY DISTRIBUTION



LUMINOUS INTENSITY DISTRIBUTION



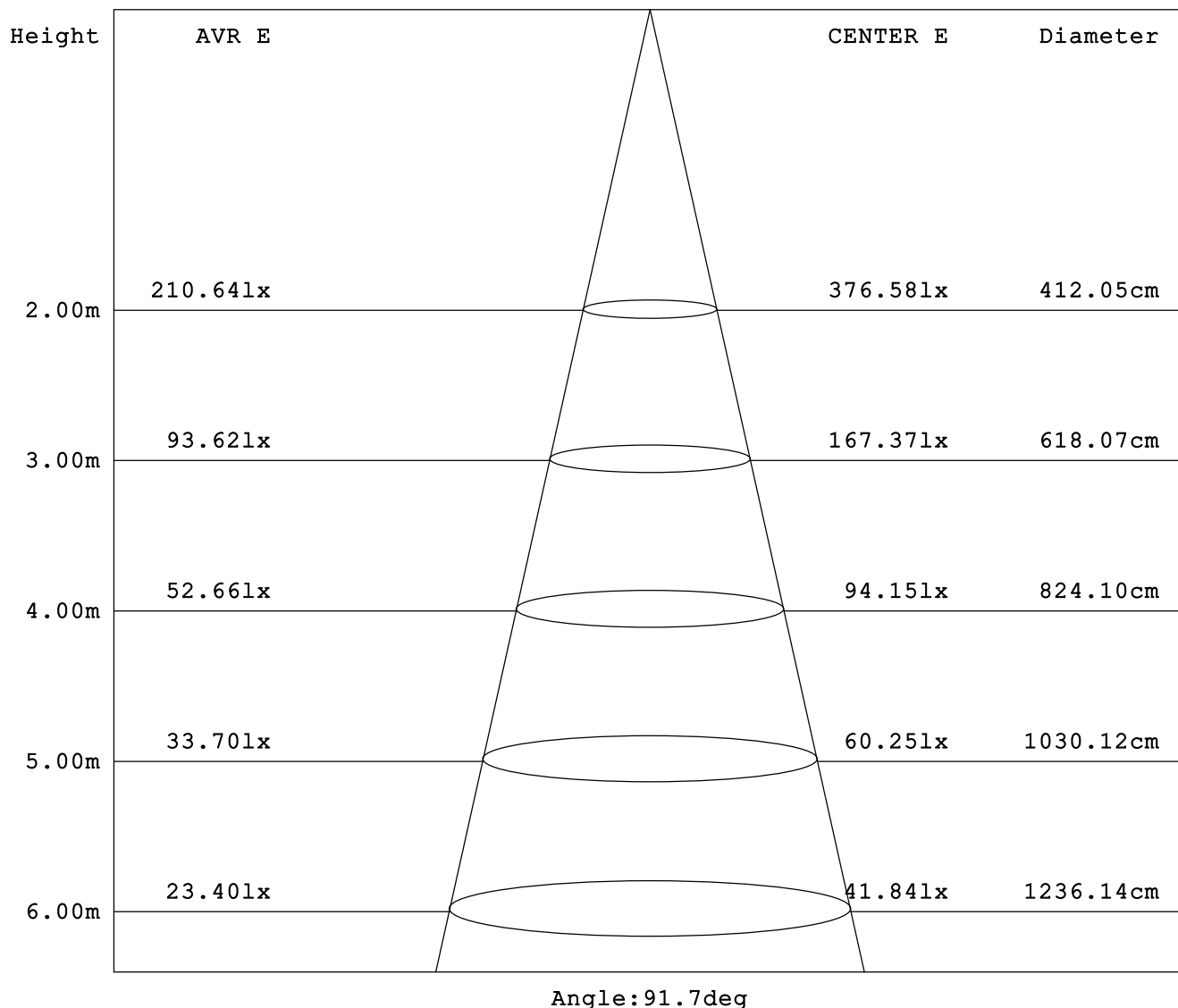
Test System:  
 Temperature: 25.3DEG  
 Operators:  
 Test Date: 2025.07.01

Test Set: 5.0deg/s C-Gamma (TYPE C)  
 Humidity: 65.0%  
 Test Distance: 10.000 m  
 Remarks:

## AVERAGE AND CENTER E Figure

Report number:

MANUFACTURER: ILUMEN GMBH	Address:	
NAME: Agnes B	TYPE: IL-PO29B-N0402C-T3B	WEIGHT:
SPECIFICATION: 5050LED、3000K、145*53DEG	DIMENSION:	SERIAL No.:



Test System:  
Temperature: 25.3DEG  
Operators:  
Test Date: 2025.07.01

Test Set: 5.0deg/s C-Gamma (TYPE C)  
Humidity: 65.0%  
Test Distance: 10.000 m  
Remarks:

## ZONAL FLUX DIAGRAM

Report number:

MANUFACTURER: ILUMEN GMBH	Address:	
NAME: Agnes B	TYPE: IL-PO29B-N0402C-T3B	WEIGHT:
SPECIFICATION: 5050LED、3000K、145*53DEG	DIMENSION:	SERIAL No.:

γ	C0	C45	C90	C135	C180	C225	C270	C315	γ	zone	total
5.0	1483	1353	1693	1621	1467	1593	1255	1331	0- 5	35.26	35.26
10.0	1504	1231	1862	1744	1464	1718	1060	1188	5- 10	105.4	140.7
15.0	1522	1117	1989	1861	1460	1819	876.7	1055	10- 15	174.0	314.7
20.0	1544	1005	2075	1973	1460	1935	710.6	923.3	15- 20	240.0	554.8
25.0	1563	885.1	2253	2107	1461	2033	605.2	792.9	20- 25	305.1	859.9
30.0	1589	767.5	2412	2248	1450	2103	589.5	675.3	25- 30	372.8	1233
35.0	1617	667.4	2422	2321	1424	2209	586.5	608.4	30- 35	440.8	1674
40.0	1629	618.9	2297	2398	1376	2339	565.3	611.4	35- 40	500.0	2174
45.0	1616	607.4	1957	2376	1322	2433	488.2	640.9	40- 45	540.4	2714
50.0	1592	627.2	1533	2251	1264	2451	422.4	626.0	45- 50	556.8	3271
55.0	1570	582.6	967.1	1987	1261	2421	366.2	601.0	50- 55	545.8	3817
60.0	1624	465.5	557.5	1788	1260	2285	316.0	465.9	55- 60	512.0	4329
65.0	1746	325.5	322.7	1455	845.5	2266	263.2	324.9	60- 65	478.4	4807
70.0	1619	228.8	181.1	936.2	391.4	2309	192.3	248.4	65- 70	447.2	5255
75.0	1077	122.3	74.34	264.0	103.1	1817	124.7	126.1	70- 75	344.5	5599
80.0	356.0	44.92	36.09	76.88	34.53	598.3	65.37	51.91	75- 80	181.7	5781
85.0	56.69	16.21	11.67	27.97	14.22	52.60	22.80	15.64	80- 85	39.92	5821
90.0	22.26	10.77	4.214	10.46	11.85	10.45	7.780	5.802	85- 90	8.931	5830
95.0									90- 95		
100.0									95-100		
105.0									100-105		
110.0									105-110		
115.0									110-115		
120.0									115-120		
125.0									120-125		
130.0									125-130		
135.0									130-135		
140.0									135-140		
145.0									140-145		
150.0									145-150		
155.0									150-155		
160.0									155-160		
165.0									160-165		
170.0									165-170		
175.0									170-175		
180.0									175-180		
DEG	LUMINOUS INTENSITY:cd									UNIT:lm	

Test System:  
 Temperature:25.3DEG  
 Operators:  
 Test Date:2025.07.01

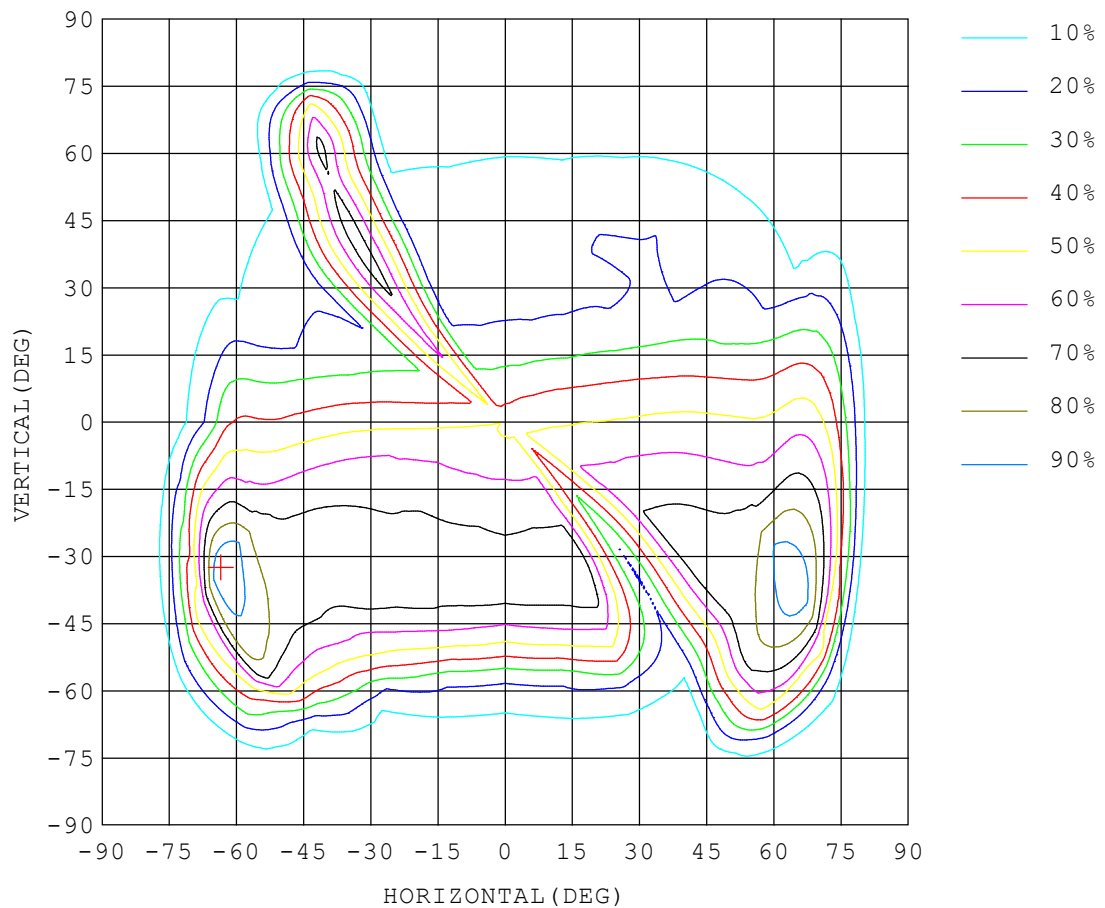
Test Set: 5.0deg/s C-Gamma (TYPE C)  
 Humidity:65.0%  
 Test Distance:10.000 m  
 Remarks:

## ISOCANDELA DIAGRAM

Report number:

MANUFACTURER: ILUMEN GMBH	Address:	
NAME: Agnes B	TYPE: IL-PO29B-N0402C-T3B	WEIGHT:
SPECIFICATION: 5050LED、3000K、145*53DEG	DIMENSION:	SERIAL No.:

UNIT: cd



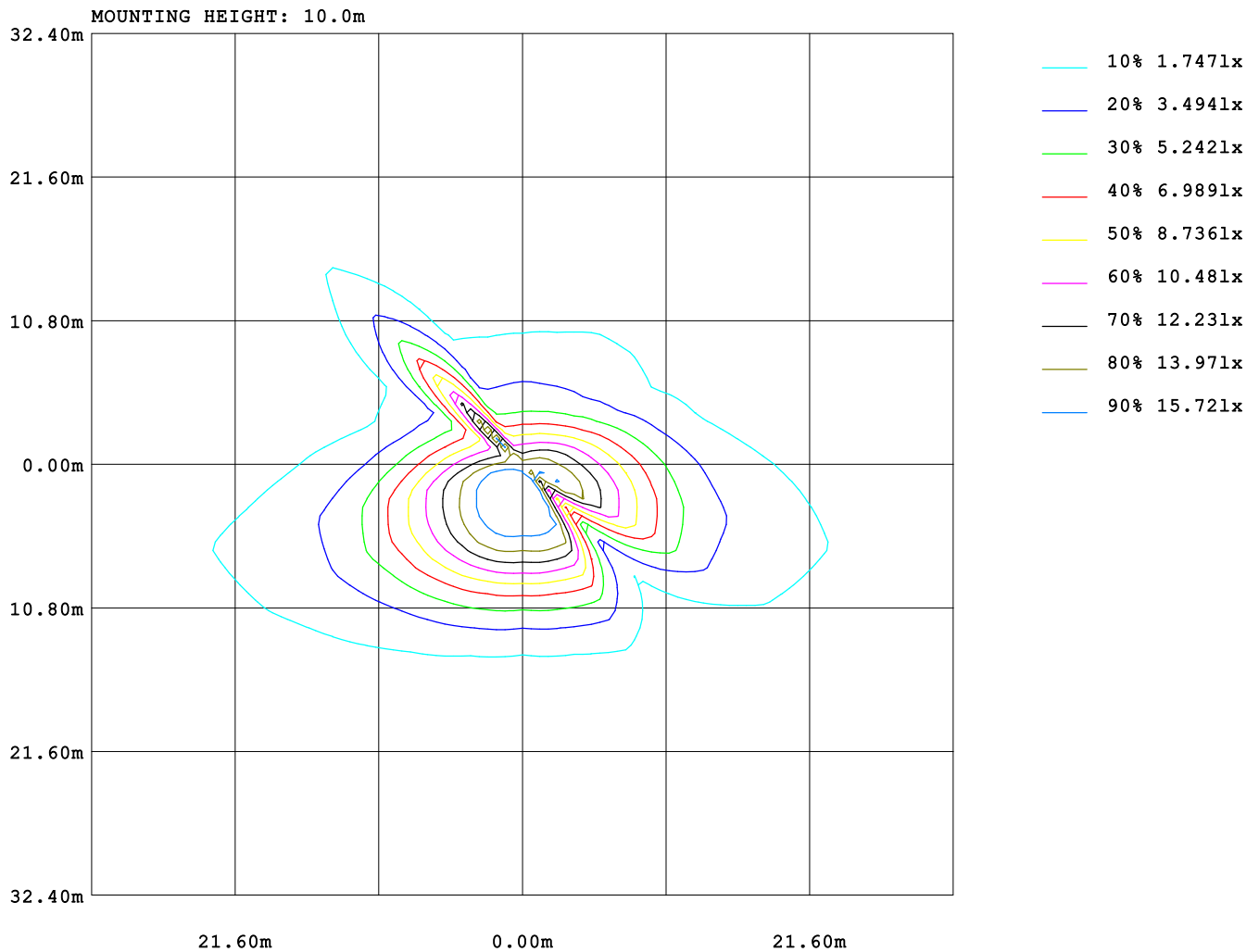
Test System:  
Temperature: 25.3 DEG  
Operators:  
Test Date: 2025.07.01

Test Set: 5.0 deg/s C-Gamma (TYPE C)  
Humidity: 65.0%  
Test Distance: 10.000 m  
Remarks:

## ISOLUX DIAGRAM

Report number:

MANUFACTURER: ILUMEN GMBH	Address:	
NAME: Agnes B	TYPE: IL-PO29B-N0402C-T3B	WEIGHT:
SPECIFICATION: 5050LED、3000K、145*53DEG	DIMENSION:	SERIAL No.:



Test System:  
Temperature: 25.3DEG  
Operators:  
Test Date: 2025.07.01

Test Set: 5.0deg/s C-Gamma (TYPE C)  
Humidity: 65.0%  
Test Distance: 10.000 m  
Remarks:

## LUMINOUS DISTRIBUTION INTENSITY DATA

Report number:

<b>MANUFACTURER:</b> ILUMEN GMBH	<b>Address:</b>	
<b>NAME:</b> Agnes B	<b>TYPE:</b> IL-PO29B-N0402C-T3B	<b>WEIGHT:</b>
<b>SPECIFICATION:</b> 5050LED、3000K、145*53DEG	<b>DIMENSION:</b>	<b>SERIAL No.:</b>

UNIT: cd

C (DEG) γ (DEG)	0	15	30	45	60	75	90	105	120	135	150	165	180	195	210
0.0	1476	1476	1476	1476	1476	1476	1476	1476	1476	1476	1476	1476	1476	1476	1476
5.0	1483	1541	1593	1353	1671	1694	1693	1686	1655	1621	1572	1522	1467	1407	1353
10.0	1504	1620	1718	1231	1838	1871	1862	1853	1799	1744	1661	1570	1464	1340	1231
15.0	1522	1690	1819	1117	1978	2009	1989	1982	1921	1861	1752	1628	1460	1272	1117
20.0	1544	1768	1935	1005	2069	2139	2075	2109	2001	1973	1848	1683	1460	1201	1005
25.0	1563	1841	2033	885	2232	2327	2253	2301	2179	2107	1902	1742	1461	1130	885
30.0	1589	1926	2103	768	2434	2489	2412	2461	2362	2248	1995	1813	1450	1052	768
35.0	1617	2013	2209	667	2551	2549	2422	2515	2462	2321	2098	1877	1424	960	667
40.0	1629	2080	2339	619	2483	2411	2297	2377	2397	2398	2205	1923	1376	856	619
45.0	1616	2118	2433	607	2307	2088	1957	2069	2240	2376	2290	1960	1322	734	607
50.0	1592	2160	2451	627	1977	1718	1533	1714	1944	2251	2346	1989	1264	602	627
55.0	1570	2231	2421	583	1553	1170	967	1180	1564	1987	2371	2051	1261	473	583
60.0	1624	2487	2285	466	973	650	558	649	1038	1788	2333	2318	1260	373	466
65.0	1746	2947	2266	326	523	379	323	367	492	1455	2357	2841	846	281	326
70.0	1619	3098	2309	229	273	241	181	232	261	936	2383	2628	391	170	229
75.0	1077	2457	1817	122	112	101	74.3	93.5	90.2	264	1204	1456	103	86.4	122
80.0	356	755	598	44.9	54.1	51.3	36.0	44.9	40.4	76.8	423	430	34.5	27.1	44.9
85.0	56.6	109	52.6	16.2	19.0	22.5	11.6	19.7	12.1	27.9	23.5	43.7	14.2	8.02	16.2
90.0	22.2	26.0	10.4	10.7	7.71	8.79	4.21	8.63	4.09	10.4	4.61	13.8	11.8	7.91	10.7

Test System:  
Temperature:25.3DEG  
Operators:  
Test Date:2025.07.01

Test Set: 5.0deg/s C-Gamma (TYPE C)  
Humidity:65.0%  
Test Distance:10.000 m  
Remarks:

## LUMINOUS DISTRIBUTION INTENSITY DATA

Report number:

<b>MANUFACTURER: ILUMEN GMBH</b>	<b>Address:</b>	
<b>NAME: Agnes B</b>	<b>TYPE: IL-PO29B-N0402C-T3B</b>	<b>WEIGHT:</b>
<b>SPECIFICATION: 5050LED、3000K、145*53DEG</b>	<b>DIMENSION:</b>	<b>SERIAL No.:</b>

UNIT: cd

C (DEG) γ (DEG)	225	240	255	270	285	300	315	330	345
0.0	1476	1476	1476	1476	1476	1476	1476	1476	1476
5.0	1593	1275	1255	1255	1264	1292	1331	1383	1438
10.0	1718	1093	1060	1060	1072	1121	1188	1287	1397
15.0	1819	926	878	877	899	966	1055	1191	1353
20.0	1935	763	712	711	734	810	923	1091	1306
25.0	2033	637	606	605	617	670	793	1000	1260
30.0	2103	591	587	590	586	597	675	900	1217
35.0	2209	597	588	587	587	599	608	790	1163
40.0	2339	617	576	565	589	619	611	686	1101
45.0	2433	598	502	488	539	632	641	602	1011
50.0	2451	502	423	422	448	582	626	558	897
55.0	2421	405	362	366	381	464	601	525	775
60.0	2285	315	307	316	317	360	466	467	628
65.0	2266	257	253	263	263	282	325	360	451
70.0	2309	189	182	192	195	209	248	249	260
75.0	1817	117	109	125	117	136	126	154	116
80.0	598	58.0	52.3	65.3	56.2	66.0	51.9	61.2	45.0
85.0	52.6	19.4	14.2	22.8	16.1	23.7	15.6	21.3	11.6
90.0	10.4	8.14	4.06	7.78	3.99	8.70	5.80	10.8	6.30

Test System:  
Temperature: 25.3DEG  
Operators:  
Test Date: 2025.07.01

Test Set: 5.0deg/s C-Gamma (TYPE C)  
Humidity: 65.0%  
Test Distance: 10.000 m  
Remarks: